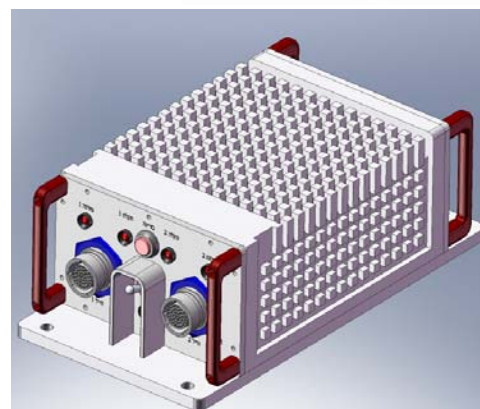


Integrated Power & Signal Distribution Unit for Ground vehicles (IPSDUGV)

General Description

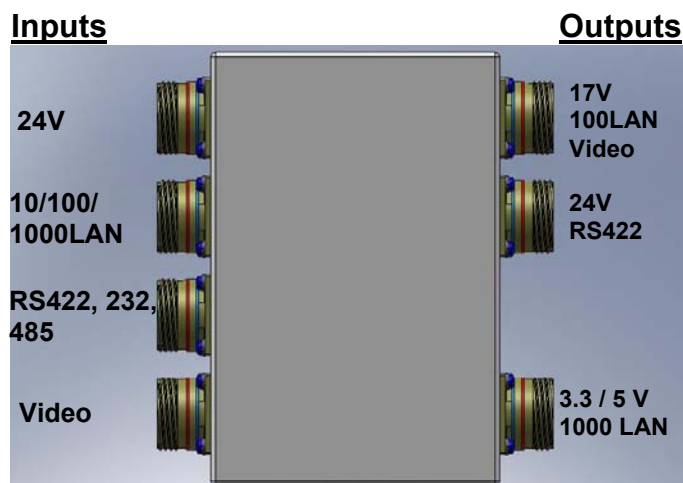
IPSDUGV is a vehicular multipurpose power distribution, battery charger and wire-line signal transfer unit, custom designed to interconnect all the vehicle electrical and electronic equipment in use.



These products are combined into standard electronic package sizes and in any specific configuration, per customer requests.

This family of integrated units is applicable to all kinds of vehicles, such as: truck, HMMWV, APC, self-propelled cannon, tank etc.

The figure below shows an example of a configuration of this unit:



Applications

IPSDUGV is designed to interconnect all fixed and portable users in the vehicle, such as:

- communication & radios
- navigation instruments
- computers & tactical PDAs
- sensor & image systems
- tactical portable laptops

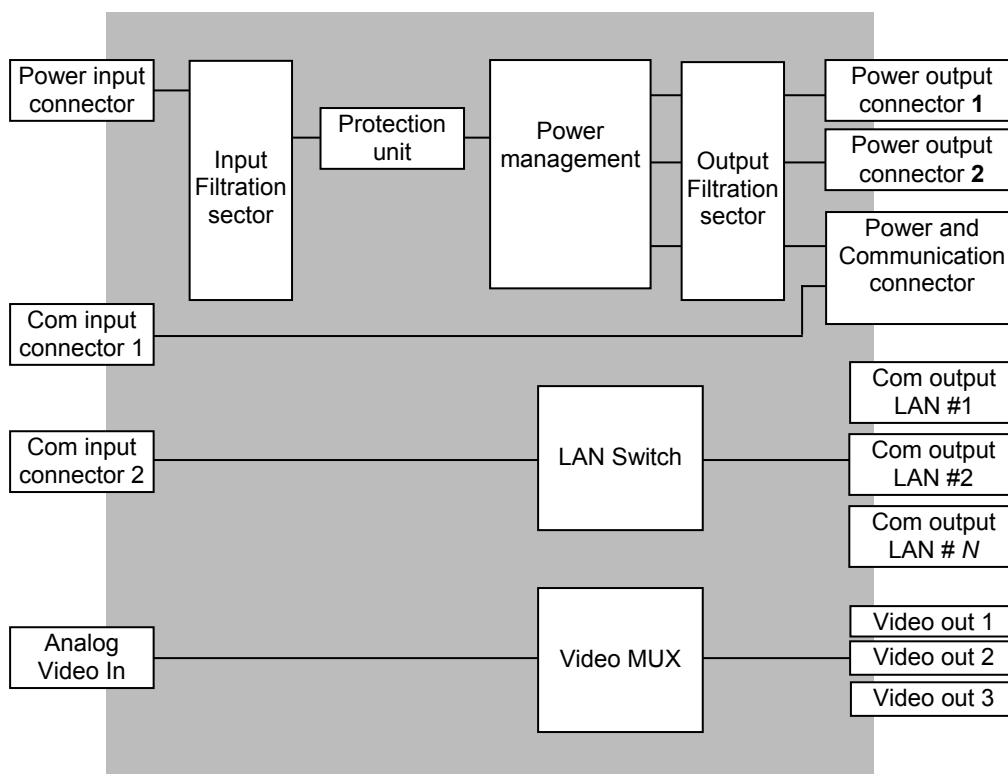
Functions

The integrated distribution unit is designed to split a variety of inputs to different consumers while meeting Mil-Std's -461, 1275 and 810.

- The unit can be powered from the vehicle power BUS, “process” all filtering and protections requirements and split the power into a variety of power output voltages and users.
- The unit can transfer (feed-thru) to the consumer equipment any type of communication signal lines.
- The unit can be switched for LAN applications (common four outputs).
- The unit can deliver video signals to up to 3 monitors / consumers.

NOTE: the IPSDUGV can include any variation according to customer needs

General layout example



Typical Specifications

All relevant standards

Performance subjected to changes without prior notice

JUNE 08/IPSDU/A1